



Smart automation Data Visualization

VELMURUGAN V ¹

*P.G Student, Department of Master Computer Application, Sri Manakula Vinayagar Engineering College,
Pondicherry-605 107*

Mr.P. RAJAPANDIAN ²

*Associate Professor, Department of Master Computer Application, Sri Manakula Vinayagar Engineering College,
Pondicherry-605 107.*

Abstract - Smart Automation Data Visualization is an AI-powered analytics and dashboard generation system developed to automate the process of data analysis, visualization, predictive analytics, and business reporting. The system enables users to upload datasets in CSV or Excel format and automatically generates intelligent dashboards with suitable charts, KPI metrics, and analytical insights without requiring manual configuration or technical expertise.

The proposed system uses Machine Learning techniques for dataset pattern detection and smart chart recommendation. The Random Forest algorithm is used to identify dataset structures and recommend appropriate visualization types such as Bar Charts, Column Charts, Line Charts, Histograms, Pie Charts, Donut Charts, Stacked Bar Charts, KPI Cards, and Sparklines. Data preprocessing and analysis are performed using Pandas, while machine learning operations are implemented using Scikit-learn. Interactive and responsive visualizations are dynamically rendered using Chart.js.

The platform also includes predictive analytics functionality using Linear Regression models to forecast future sales, revenue, and profit trends based on historical data. The system automatically detects trends, correlations, and performance patterns, enabling users to make data-driven business decisions. In addition, AI-generated analytical reports and KPI summaries provide detailed business intelligence insights in a user-friendly format.

The Smart Automation Data Visualization system reduces manual analytical effort, improves reporting efficiency, and enhances business decision-making through intelligent automation and real-time interactive dashboards. The proposed solution provides capabilities similar to modern business intelligence platforms such as Microsoft Power BI and Tableau while focusing on automated visualization, predictive analysis, and smart analytics generation using Artificial Intelligence and Machine Learning technologies.

Keywords

AI, Data Visualization, Machine Learning, Dashboard, Analytics, Automation, Business Intelligence, Recommendation System, Trend Analysis; Comparative Visualization; Scalable Analytics

1. INTRODUCTION

In the modern digital era, organizations generate massive amounts of data from various business operations such as sales, marketing, customer management, finance, and supply chain activities. Analyzing these large datasets manually is time-consuming, complex, and inefficient. Business organizations require intelligent systems that can automatically analyze data, generate meaningful insights, and provide interactive visualizations for better decision-making. This has increased the importance of Business Intelligence (BI), Data Visualization, Machine Learning, and Predictive Analytics technologies in modern enterprises.

Smart Automation Data Visualization is an AI-powered analytics and dashboard generation system developed to automate the process of data analysis, chart recommendation, predictive analytics, and business reporting. The system allows users to upload datasets in CSV or Excel format and automatically generates intelligent dashboards with interactive charts, KPI metrics, predictive trends, and analytical reports. The platform reduces manual effort by automatically detecting dataset patterns and selecting appropriate visualizations without requiring advanced technical knowledge.

The proposed system uses Machine Learning techniques for smart chart recommendation and predictive analysis. The Random Forest algorithm is used for dataset pattern detection and chart recommendation, while Linear Regression techniques are applied for predictive forecasting and trend analysis. The system dynamically analyzes categorical,



numerical, and date-based data columns to generate suitable visualizations such as Bar Charts, Column Charts, Line Charts, Histograms, Pie Charts, Donut Charts, Stacked Bar Charts, KPI Cards, and Sparklines.

The application is developed using modern data analytics technologies including Pandas for data preprocessing and statistical analysis, Scikit-learn for machine learning implementation, and Chart.js for interactive dashboard visualization. The system also integrates AI-generated business reporting capabilities using advanced language models to provide professional analytical summaries, business insights, and predictive reports.

The main objective of this project is to build a smart and automated analytics platform capable of transforming raw datasets into meaningful visual dashboards and predictive business intelligence reports. The proposed system improves reporting efficiency, supports real-time analytics, enhances business decision-making, and minimizes the complexity involved in traditional data analysis processes.

The Smart Automation Data Visualization system can be used in various domains such as sales analytics, financial reporting, marketing analysis, inventory management, customer behavior analysis, and enterprise business intelligence applications. By integrating Artificial Intelligence, Machine Learning, and interactive visualization technologies, the system provides a modern solution for automated data analytics and predictive dashboard generation comparable to platforms such as Microsoft Power BI and Tableau.

2. PROBLEM STATEMENT

Modern organizations generate huge amounts of business data from sales, finance, marketing, inventory, and customer management systems. Traditional methods of data analysis and reporting are often manual, time-consuming, and require technical expertise to interpret complex datasets. Many small and medium-scale organizations lack intelligent systems capable of automatically analyzing datasets and generating meaningful visual insights. Existing dashboard systems often require users to manually configure charts, select visualization types, and perform data preprocessing, which increases complexity and reduces efficiency. In addition, many reporting systems lack predictive analytics capabilities and real-time business intelligence features. This creates challenges in identifying business trends, forecasting future performance, and making data-driven decisions quickly. Therefore, there is a need for an intelligent and automated data visualization system that can analyze datasets, recommend suitable charts, generate

KPI metrics, and provide predictive analytics using Machine Learning and Artificial Intelligence technologies.

3. EXISTING SYSTEM

Existing data visualization and business intelligence systems are widely used in organizations to analyze datasets and generate reports. Popular platforms such as Microsoft Power BI, Tableau, and Google Looker Studio provide advanced dashboard creation and reporting functionalities. These systems help organizations visualize business performance, monitor KPIs, and generate analytical reports using charts and graphs. However, many existing systems require significant manual effort and technical expertise to configure dashboards and perform advanced analysis.

In traditional systems, users must manually upload datasets, clean data, identify important columns, select appropriate chart types, and configure visualizations. This process becomes difficult for non-technical users who do not have expertise in data analytics or business intelligence tools. In many cases, selecting inappropriate chart types can lead to poor data interpretation and ineffective decision-making. Existing systems also rely heavily on user-defined configurations rather than intelligent automation.

Another limitation of current systems is the lack of automatic dataset pattern detection. Most visualization tools do not automatically understand relationships between numerical, categorical, and date-based data columns. As a result, users spend additional time configuring charts and generating reports manually. Furthermore, many systems do not provide integrated predictive analytics functionality for forecasting future business trends and performance.

Traditional dashboard systems mainly focus on historical data visualization rather than predictive analysis. Forecasting future sales, revenue, or profit often requires additional external tools and complex analytical models. Moreover, existing systems may not provide AI-generated business insights or automated analytical reporting capabilities. This limits the ability of organizations to quickly identify important trends and strategic opportunities.

4. PROPOSED SYSTEM

The proposed Smart Automation Data Visualization system is an AI-powered business intelligence and predictive analytics platform designed to automate data analysis, chart generation, KPI monitoring, and predictive reporting. The system enables users to upload datasets in CSV or Excel format and automatically generates intelligent dashboards with suitable visualizations and analytical insights. The primary objective of

the proposed system is to simplify complex data analysis processes and provide automated business intelligence solutions using Machine Learning and Artificial Intelligence technologies.

The proposed system uses the Random Forest Machine Learning algorithm for dataset pattern detection and intelligent chart recommendation. The system automatically analyzes dataset structures and identifies categorical, numerical, and date-based columns. Based on detected patterns, the system dynamically recommends appropriate visualization types such as Bar Charts, Column Charts, Line Charts, Histograms, Pie Charts, Donut Charts, KPI Cards, Stacked Bar Charts, and Sparklines.

The platform uses Pandas for data preprocessing, aggregation, and statistical analysis. Data cleaning and transformation operations are automatically performed to improve data quality and analytical accuracy. Unnecessary columns such as IDs, phone numbers, customer names, and address fields are ignored during analytical processing to avoid irrelevant visualizations and improve prediction quality.

The system also includes predictive analytics functionality using Linear Regression techniques. Historical business data is analyzed to identify trends and forecast future sales, revenue, and profit performance. The predictive engine calculates regression slopes, correlation values, growth trends, and future projections. Forecast results are visualized using interactive trend charts and predictive dashboards.

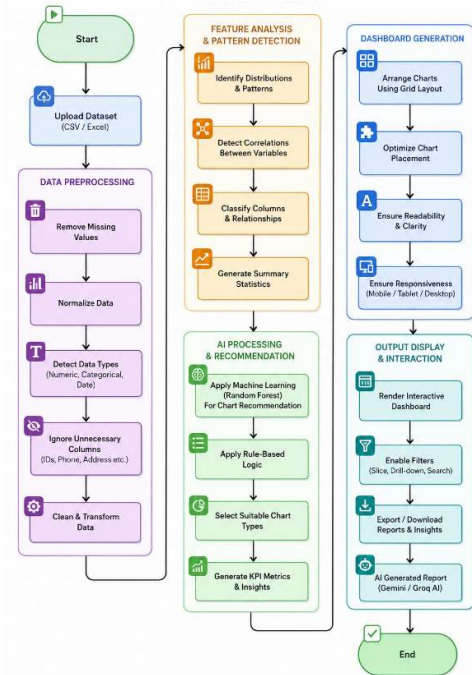
The proposed system integrates AI-generated reporting capabilities using advanced language models such as Gemini AI and Groq AI APIs. Analytical summaries, KPI reports, predictive insights, and business intelligence narratives are automatically generated in a human-readable format. This helps organizations understand business performance more effectively without requiring advanced analytical knowledge.

The frontend dashboard is developed using interactive and responsive visualization technologies such as Chart.js. Dynamic chart rendering, real-time KPI updates, smart dashboard recommendations, and responsive layouts improve user experience and analytical efficiency. The system also supports multi-dataset dashboard analysis and dynamic dashboard updates.

The proposed platform offers several advantages over traditional BI systems. It reduces manual effort, automates chart selection, supports predictive analytics, and generates intelligent reports automatically. The system is cost-effective, scalable, and suitable for business organizations, educational institutions, startups, and research applications. By combining

Machine Learning, predictive analytics, AI-generated reporting, and intelligent visualization, the proposed system provides a modern automated analytics solution comparable to enterprise business intelligence platforms.

5. ALGORITHMS



The proposed Smart Automation Data Visualization system uses Machine Learning and statistical algorithms to automate chart recommendation, predictive analytics, and business intelligence reporting. These algorithms help the system analyze datasets intelligently and generate suitable visualizations and predictive insights automatically.

The primary algorithm used for dataset pattern detection is the Random Forest algorithm. Random Forest is a supervised Machine Learning classification algorithm that creates multiple decision trees and combines their outputs to improve prediction accuracy. In this system, Random Forest analyzes dataset features such as categorical columns, numerical columns, date columns, and uniqueness ratios to predict the most suitable chart type for visualization. This helps automate dashboard generation without requiring manual chart selection.

The system also uses Linear Regression for predictive analytics and trend forecasting. Linear Regression identifies relationships between historical data points and predicts future values such as sales, revenue, and profit growth. The algorithm calculates regression slope, intercept, and prediction accuracy to generate future trend analysis and forecast charts.

Correlation Analysis techniques are used to identify relationships between variables in datasets. The system calculates correlation coefficients between numerical columns to detect strong positive or negative relationships. These insights help identify important business drivers and performance indicators.

Data preprocessing and statistical analysis operations are performed using Pandas and NumPy libraries. Aggregation, grouping, filtering, and KPI calculations are automatically performed to generate business intelligence summaries and analytical dashboards.

6. SYSTEM ARCHITECTURE

The Smart Automation Data Visualization system follows a multi-layered architecture designed to support intelligent data processing, dynamic dashboard generation, predictive analytics, and AI-powered reporting. The architecture is divided into four major layers: Presentation Layer, Application Layer, Data Layer, and AI Processing Layer. Each layer performs specific responsibilities to ensure scalability, automation, performance, and efficient business intelligence processing.

6.1 Presentation Layer (Frontend)

The Presentation Layer provides an interactive and user-friendly interface for users to upload datasets, visualize charts, monitor KPIs, and access predictive analytics dashboards. The frontend is developed using modern web technologies such as Angular or React to ensure responsive design, fast rendering, and smooth user interaction.

This layer allows users to:

- Upload CSV and Excel datasets
- View dynamic dashboards
- Interact with charts and KPIs
- Apply filters and dataset selections
- Analyze predictive trends
- Access AI-generated reports

Interactive visualizations are implemented using Chart.js, enabling dynamic rendering of Bar Charts, Line Charts, Pie Charts, Histograms, Donut Charts, KPI Cards, Stacked Bar Charts, and Sparklines. The frontend also supports responsive layouts, animated chart transitions, and real-time dashboard updates to improve user experience and usability.

6.2 Application Layer (Backend)

The Application Layer manages the server-side logic, API handling, authentication, dataset routing, and communication between frontend components and the AI processing engine. The backend is developed using Node.js and Express.js to support scalable and efficient request processing.

This layer performs several important functions:

- Handles dataset upload requests
- Manages dashboard APIs
- Coordinates predictive analytics processing
- Routes requests to the AI engine
- Handles authentication and authorization
- Manages report generation workflows

The backend acts as the central controller of the system and ensures secure communication between the frontend and processing modules. It also supports modular integration of analytics engines, chart generation systems, and predictive analysis modules.

6.3 Data Layer (Database)

The Data Layer is responsible for storing datasets, dashboard configurations, analytical metadata, generated reports, and user information. Databases such as MongoDB or Firebase are used to provide flexible and scalable data storage capabilities.

The data layer supports:

- Structured and semi-structured data storage
- Fast dataset retrieval
- Dashboard persistence
- User management
- KPI storage
- Historical analytical records

The database system ensures efficient indexing, secure storage, and optimized query performance for large datasets. It also supports dynamic dashboard updates and multi-dataset analytics operations.

6.4 AI Processing Layer

The AI Processing Layer is the core component of the Smart Automation Data Visualization system. This layer is implemented using Python and is responsible for intelligent dataset analysis, chart recommendation, predictive analytics, KPI generation, and AI-powered reporting.

The AI engine uses:

- Random Forest algorithm for dataset pattern detection and chart recommendation
- Linear Regression for predictive analytics and forecasting
- Correlation Analysis for relationship detection
- Statistical analysis for KPI calculation

The processing workflow includes:

- Data preprocessing
- Missing value handling
- Feature extraction
- Numeric and categorical detection
- Dataset pattern analysis
- Predictive forecasting
- AI-generated report creation

The layer dynamically analyzes dataset structures and automatically recommends suitable visualizations

7. RESULTS AND ANALYSIS

The Smart Automation Data Visualization system was successfully developed and tested using multiple business datasets related to sales, revenue, profit, and customer analytics. The system effectively automated the process of data analysis, chart recommendation, predictive forecasting, KPI monitoring, and business report generation. Experimental results demonstrated that the proposed system significantly reduced manual analytical effort and improved dashboard generation efficiency.

The dataset pattern detection module using the Random Forest algorithm successfully identified numerical, categorical, and date-based columns and generated appropriate chart recommendations automatically. The system accurately recommended Bar Charts, Line Charts, Pie Charts, Histograms, Donut Charts, Stacked Bar Charts, and KPI visualizations based on dataset structures and feature relationships. This improved the quality of data visualization and reduced manual configuration complexity.

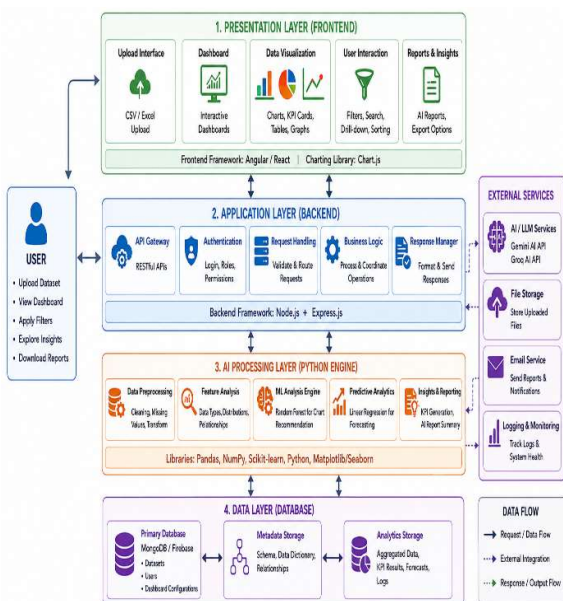
The predictive analytics module using Linear Regression successfully forecasted future sales and revenue trends based on historical datasets. Trend analysis accurately detected business growth and decline patterns using regression slope calculations and correlation analysis. Forecast charts displayed predicted future values, helping users understand future business performance more effectively.

The KPI engine generated important business intelligence metrics including total revenue, total profit, average sales, profit margins, growth percentages, and trend indicators. Dynamic dashboards updated automatically after dataset uploads, providing responsive and interactive analytical visualizations. The use of Chart.js improved dashboard interactivity and user experience.

AI-generated business reports using Gemini AI and Groq AI APIs successfully produced analytical summaries, predictive insights, and professional business intelligence narratives. The generated reports improved readability and helped users interpret complex analytical data more efficiently.

Performance testing showed that the system handled large datasets effectively and generated dashboards dynamically within a short response time. The intelligent ignore-column mechanism improved analytics quality by removing irrelevant fields such as IDs, phone numbers, customer names, and address columns from predictive analysis and visualization generation.

8. FUTURE WORK



The Smart Automation Data Visualization system can be further enhanced by integrating advanced Artificial Intelligence, Deep Learning, and real-time analytics technologies. Future improvements will focus on increasing analytical intelligence, improving prediction accuracy, and supporting enterprise-scale business intelligence applications.

Future versions of the system can include real-time streaming analytics using technologies such as WebSockets and Apache Kafka. This would allow dashboards to update automatically using live business data from IoT devices, cloud databases, and enterprise systems. Real-time monitoring and live KPI tracking will improve decision-making efficiency for organizations.

The chart recommendation engine can be improved using Natural Language Processing (NLP) and semantic analysis to better understand dataset context and automatically generate explainable AI insights. Future systems can also support voice-based analytical queries and chatbot integration for conversational business intelligence.

Additional visualization types such as Heatmaps, Treemaps, Sankey Diagrams, Radar Charts, and Geographic Maps can be integrated to improve analytical flexibility. Multi-user collaboration, role-based access control, and cloud deployment features can also be added for enterprise-level scalability.

Future development may also include AutoML functionality, anomaly detection systems, sentiment analysis, and AI-powered recommendation systems. Integration with cloud platforms and big data technologies will further improve scalability and performance for handling massive datasets and complex business analytics environments.

9. CONCLUSION

The Smart Automation Data Visualization system was successfully developed as an AI-powered business intelligence and predictive analytics platform capable of automating data analysis, chart recommendation, KPI monitoring, and analytical reporting. The proposed system effectively transforms raw datasets into interactive dashboards, predictive visualizations, and intelligent business insights using Machine Learning and Artificial Intelligence technologies.

The project addressed the major limitations of traditional business intelligence systems by reducing manual analytical effort and automating dashboard generation processes. The integration of the Random Forest Machine Learning algorithm enabled intelligent dataset pattern detection and automatic chart recommendation based on categorical, numerical, and date-based dataset structures. This significantly improved visualization accuracy and user experience.

The predictive analytics module using Linear Regression successfully forecasted future sales, revenue, and profit trends based on historical business data. Trend analysis and correlation analysis provided meaningful business intelligence insights and supported data-driven decision-making. The generated predictive charts and KPI dashboards improved analytical understanding and helped identify future business opportunities and performance trends.

The use of Pandas for data preprocessing and Scikit-learn for Machine Learning implementation improved the efficiency and scalability of the analytics engine. Interactive dashboards created using Chart.js provided responsive and visually effective business intelligence interfaces. AI-generated analytical reporting using Gemini AI and Groq AI APIs further enhanced the system by automatically generating professional business reports and predictive summaries.

The system demonstrated strong performance in handling sales analytics, profit analysis, KPI monitoring, and automated dashboard generation using large datasets. The intelligent ignore-column mechanism improved prediction quality by eliminating irrelevant fields such as IDs, customer names, phone numbers, and address columns during analysis.

The proposed system can be effectively used in multiple domains such as business intelligence, financial analytics, marketing analysis, inventory management, customer analytics, and enterprise reporting systems. The platform provides a cost-effective and scalable alternative to enterprise analytics platforms such as Microsoft Power BI and Tableau while focusing on automation, predictive analytics, and AI-generated insights.

In conclusion, the Smart Automation Data Visualization system successfully combines Machine Learning, predictive analytics, AI-generated reporting, and intelligent dashboard visualization to provide a modern automated analytics platform capable of improving business decision-making, analytical efficiency, and organizational productivity.

10. REFERENCES

1. Breiman, L. "Random Forests." *Machine Learning Journal*, 2001.
2. Han, J., Kamber, M., & Pei, J. *Data Mining Concepts and Techniques*. Morgan Kaufmann, 2011.
3. Géron, A. *Hands-On Machine Learning with Scikit-Learn*. O'Reilly Media, 2019.
4. McKinney, W. *Python for Data Analysis*. O'Reilly Media, 2022.



5. Few, S. *Information Dashboard Design*. Analytics Press, 2013.
6. Provost, F., & Fawcett, T. *Data Science for Business*. O'Reilly Media, 2013.
7. Pedregosa, F. et al. "Scikit-learn: Machine Learning in Python." JMLR, 2011.

Hunter, J. D. "Matplotlib: A 2D Graphics Environment." Computing in Science & Engineering, 2007.