

Smart Waste Management System

Sujal Wadankar

¹Mukta Joshi, ²Dnyaneshree Vaidya, ³Pranum Jadhav, ⁴Janhavi Kalve

Sipna College of Engineering And Technology

Abstract – Traditional municipal waste collection systems operate on fixed schedules, sending collection vehicles regardless of actual bin conditions, which leads to inefficient resource utilization, unnecessary fuel consumption, higher operational costs, and environmental pollution. To address these challenges, this project proposes an intelligent **IoT-based Smart Waste Management System** that transforms conventional schedule-driven waste collection into a demand-based and data-driven process using real-time monitoring and predictive analytics.

In the proposed system, ultrasonic sensors installed in waste bins continuously measure fill levels and transmit telemetry data to a centralized backend developed using the FastAPI framework at regular 30-second intervals. The collected sensor data is processed using a statistical prediction pipeline that applies Interquartile Range (IQR)- based outlier removal to eliminate abnormal readings and improve accuracy. After filtering, an Exponential Moving Average (EMA) model predicts the future fill level of each bin and estimates the expected overflow time. Based on these predictions, an urgency score is calculated for each bin to support intelligent collection prioritization.

To further enhance operational efficiency, the system incorporates a route optimization engine that applies Greedy, Priority-based, Hybrid, and 2-Opt optimization algorithms to generate the most efficient waste collection routes for field crews while minimizing travel distance and servicing high-risk bins first. Field operators access optimized navigation through an installable Progressive Web Application (PWA) with live waypoint tracking, whereas administrators monitor the complete bin network through a Next.js-based dashboard that provides zone management, real-time status visualization using WebSocket communication, push notifications through Firebase Cloud Messaging, and automated report generation in PDF and Excel formats.

The system also implements a dual authentication mechanism, using SHA-256-secured API keys for IoT device communication and Firebase JWT authentication for authorized users. All operational data is stored in a PostgreSQL database

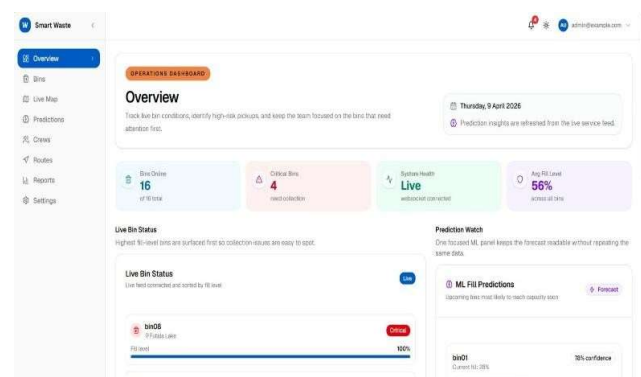
with Alembic migration support, ensuring scalability and structured data management.

Overall, the proposed solution shifts municipal waste collection from a static schedule-based approach to a predictive and intelligent monitoring framework that reduces unnecessary vehicle trips, prevents bin overflow, improves operational efficiency, and supports environmentally sustainable smart city waste management practices.

I. INTRODUCTION –

Rapid urbanization has significantly increased municipal solid waste generation across cities. Traditional waste collection systems operate using fixed collection schedules, where trucks visit bins regardless of their fill levels. This leads to inefficient resource utilization, unnecessary fuel consumption, increased operational costs, and environmental pollution.

To address these limitations, smart city infrastructure increasingly integrates Internet of Things (IoT) and real-time analytics into municipal services. Smart waste management systems enable authorities to monitor bin status remotely and schedule collections only when required.



The proposed Smart Waste Management System introduces a data-driven framework that combines:

- Ultrasonic sensor-based bin monitoring
- Real-time telemetry communication
- Statistical prediction models

- Route optimization algorithms
- Web dashboard monitoring
- Mobile Progressive Web App (PWA) support

Unlike conventional systems, this solution predicts future fill levels instead of reacting after overflow occurs. The system uses Exponential Moving Average prediction combined with Interquartile Range outlier filtering to forecast bin capacity levels and generate optimized collection routes dynamically.

As a result, municipalities can:

- Reduce unnecessary vehicle trips
- Improve workforce productivity
- Prevent bin overflow
- Lower fuel usage
- Enhance environmental sustainability

This system represents a transition from schedule-based waste collection to intelligent demand-based waste management.

II. LITERATURE REVIEW –

Smart waste management has become an important research area in recent years due to the rapid growth of urban populations and increasing pressure on municipal sanitation systems. Researchers across the world have explored the integration of Internet of Things (IoT), Wireless Sensor Networks (WSN), and cloud computing technologies to improve traditional waste collection methods. The main objective of these studies has been to enable real-time monitoring of garbage bins, reduce manual inspection efforts, and optimize waste collection operations.

Early Smart Waste Monitoring Systems:

In the initial phase of smart waste management research, most systems used ultrasonic sensors combined with GSM communication modules to monitor garbage bin levels remotely. These sensors measured the distance between the waste surface and the bin lid and transmitted this information to municipal authorities through SMS or mobile networks.

Although these systems successfully enabled remote monitoring of bin fill levels, they had several limitations:

- Data transmission was slow and sometimes unreliable

- Systems only provided current bin status, not future predictions
- No automatic decision-making support for collection scheduling
- Route planning was still done manually by administrators

As a result, waste collection vehicles continued to follow fixed routes even when bins were not full, reducing operational efficiency.

Wireless Sensor Network (WSN)-Based Monitoring Systems:

Later research introduced Wireless Sensor Networks (WSN) for distributed monitoring of multiple garbage bins across urban regions. In these systems, several sensor nodes were interconnected and communicated with a central monitoring station.

WSN-based solutions improved:

- scalability of monitoring systems
- coverage across larger geographic areas
- reliability of communication between sensor nodes
- centralized monitoring capability

However, despite these improvements, most WSN-based systems still depended on manual decision-making for route selection and collection scheduling. They did not include predictive algorithms to estimate overflow time or optimize vehicle movement automatically. Therefore, the efficiency improvement remained limited.

Machine Learning-Based Waste Prediction Systems:

Recent studies have explored the use of machine learning algorithms to analyse, historical waste generation data and predict bin fill levels. These approaches attempted to estimate waste accumulation trends based on:

- time of day
- population density
- seasonal variations
- location-specific waste generation patterns

Although machine learning methods improved prediction accuracy, they introduced certain practical challenges:

- requirement of large historical datasets for training models
- high computational complexity
- dependence on cloud infrastructure
- difficulty in deployment in small and medium-scale municipalities

Because of these constraints, many AI-based systems remained suitable mainly for large smart city environments rather than general-purpose municipal deployment.

Modern Smart City Waste Management Platforms

Recent smart city solutions integrate multiple advanced technologies such as:

- cloud computing for centralized data storage
- real-time analytics for instant monitoring
- GPS tracking for vehicle location detection
- mobile dashboards for administrative control
- route optimization algorithms for efficient vehicle movement

These platforms significantly improved monitoring and coordination between field staff and municipal authorities. However, several practical limitations still exist in many currently deployed systems.

Limitations of Existing Systems:

Despite technological advancements, many current smart waste management solutions still face challenges such as:

1. Inefficient Route Selection

Some systems generate collection routes based only on current bin status rather than predicted overflow time, which may still lead to unnecessary vehicle movement.

2. Delayed Overflow Prediction

Many platforms detect bin overflow only after bins become nearly full instead of predicting overflow in advance.

3. Lack of Lightweight Deployment Frameworks

Several solutions depend on heavy infrastructure requirements and complex machine learning pipelines, making them difficult to deploy in medium-scale municipal environments.

4. Limited Mobile Workforce Integration

In many implementations, field workers do not receive optimized navigation assistance or real-time updates through mobile interfaces, reducing coordination efficiency.

Improvements Proposed in the Present System

To overcome the limitations of earlier approaches, the proposed Smart Waste Management System introduces several enhancements that improve prediction accuracy, routing efficiency, and usability.

The system integrates:

1. Statistical Fill-Rate Prediction:

This improves prediction stability and helps estimate future bin capacity more accurately.

2. Hybrid Route Optimization Strategy:

The proposed system combines multiple algorithms including:

- Greedy Algorithm
- Priority-Based Scheduling
- Hybrid Optimization Logic
- 2-Opt Route Refinement Technique

This multi-layer routing approach minimizes travel distance and ensures high-risk bins are serviced earlier.

3. Progressive Web Application (PWA) Support :

Unlike earlier systems that relied only on dashboards, this solution provides a mobile-friendly Progressive Web Application for field workers that supports:

- live route tracking
- waypoint navigation
- real-time task updates
- bin completion confirmation

This improves coordination between administrators and collection staff.

4. Real-Time WebSocket Communication :

The system uses WebSocket technology to enable instant updates between sensor nodes, backend server, and dashboard interface. This ensures administrators always view the latest bin status without refreshing the application.

5. Secure Authentication Architecture:

To ensure system reliability and data protection, the platform implements dual-layer security:

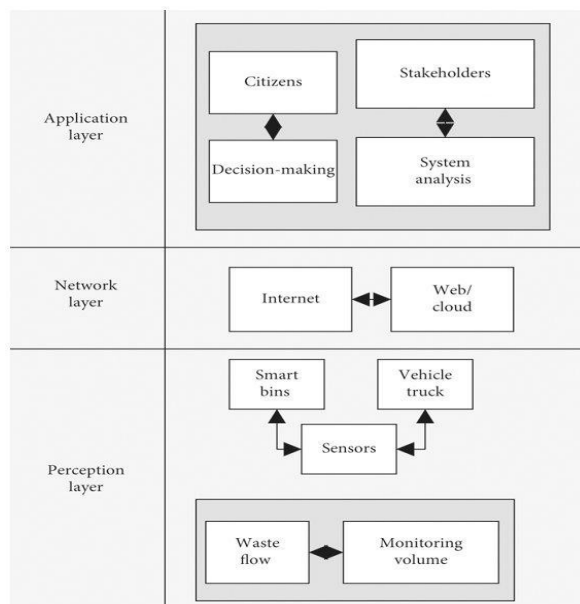
- SHA-256-based authentication for IoT devices
- Firebase JWT authentication for authorized users

This prevents unauthorized device access and protects operational data.

III. SYSTEM ARCHITECTURE –

The proposed Smart Waste Management System follows a multi-layer architecture consisting of five major layers:

1. Sensor Layer
2. Communication Layer
3. Backend Processing Layer
4. Intelligence Layer
5. Application Layer



This layered architecture ensures modularity, scalability, security, and real-time decision-making capability in municipal waste collection operations.

1. Sensor Layer :

The sensor layer represents the physical infrastructure deployed at garbage bin locations. It is responsible for collecting real-time waste level information from the environment.

Each smart bin consists of:

- Ultrasonic level sensor
- Microcontroller module
- Wireless communication interface

The ultrasonic sensor continuously measures the distance between the garbage surface and the bin lid. Using this distance value, the system calculates the bin fill percentage. This method provides a simple and reliable way to monitor waste accumulation without direct contact with garbage material.

The microcontroller processes sensor readings and formats them into structured telemetry packets before transmission. These packets typically contain:

- Bin identification number
- Timestamp
- Fill level percentage
- Device authentication token

Sensor data is transmitted to the backend server every 30 seconds, enabling continuous monitoring of bin status across multiple locations. This layer plays a critical role in ensuring accurate real-time environmental data collection for further processing.

2. Communication Layer :

The communication layer is responsible for transferring sensor data securely from distributed smart bins to the centralized backend server.

Sensor nodes communicate with the server using:

- Wireless connectivity (Wi-Fi or cellular network)
- REST-based API communication
- SHA-256 hashed device authentication

Each sensor device uses a unique encrypted API key, which ensures that only authorized hardware devices can send telemetry data to the system. This prevents unauthorized access and improves overall system security.

The REST interface ensures lightweight and efficient communication between devices and the backend server. Data transmission at regular intervals allows administrators to monitor bin conditions continuously without manual inspection.

Thus, the communication layer guarantees reliable and secure telemetry transfer between hardware and software components.

3. Backend Processing Layer :

The backend processing layer acts as the central control unit of the smart waste management system. It receives incoming telemetry data from sensor nodes and performs multiple processing operations required for decision making.

The backend server is implemented using the FastAPI framework, which provides high performance and asynchronous request handling capabilities.

Major responsibilities of this layer include:

- Telemetry data ingestion from sensor nodes
 - Data validation and preprocessing
 - Statistical filtering of abnormal readings
 - Prediction of future fill levels
 - Urgency score calculation
 - Route optimization for waste collection vehicles
- The backend also maintains structured storage of operational data using the PostgreSQL database system. Database schema management is handled through Alembic migration tools, which allow version-controlled updates without affecting system stability.

This layer ensures efficient storage, processing, and management of real-time waste monitoring information.

4. Intelligence Layer :

The intelligence layer is responsible for transforming raw sensor data into actionable insights using statistical prediction techniques and optimization algorithms.

Each bin is assigned a priority score based on:

- current fill percentage
- predicted overflow time
- location importance

Bins with higher urgency scores are scheduled earlier for collection.

Route Optimization Module :

Efficient vehicle movement is achieved using a hybrid route optimization strategy that combines multiple algorithms:

Greedy Algorithm

Selects the nearest high-priority bin first to reduce immediate travel distance.

Priority Scheduling

Ensures bins with higher urgency scores are serviced earlier.

Hybrid Optimization Strategy

Combines distance-based routing and urgency-based scheduling to generate balanced routes.

2-Opt Route Refinement Algorithm

Further improves route efficiency by minimizing unnecessary travel loops and optimizing travel paths.

Together, these techniques significantly reduce fuel consumption and operational time.

5. Application Layer:

The application layer provides user interfaces for both administrators and field workers, enabling smooth coordination and real-time monitoring.

Two main interfaces are implemented:
Administrator Dashboard (Next.js):

The administrator interface is developed using Next.js framework and provides centralized monitoring capabilities.

Main features include:

- Real-time visualization of bin status across locations
- Zone-wise bin management tools
- Data analytics and performance monitoring reports
- Export of reports in PDF and Excel formats
- Push notifications for overflow alerts and system updates

This dashboard helps municipal authorities make informed operational decisions quickly.

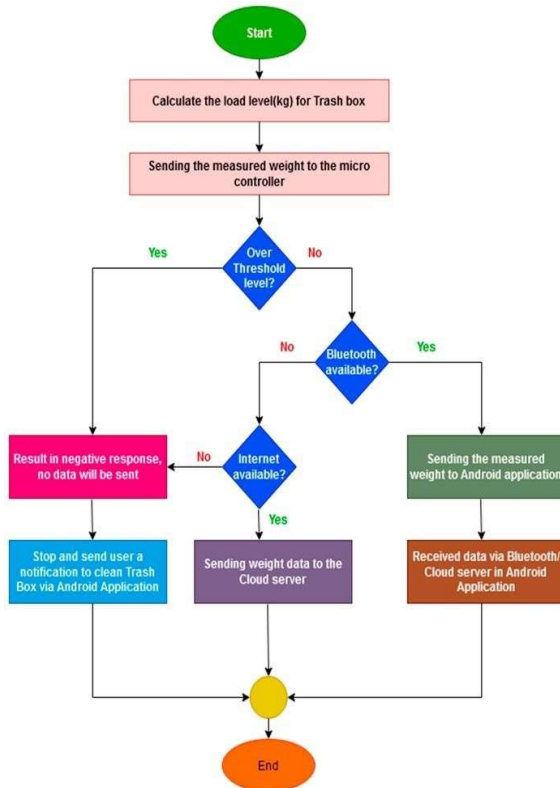
Field Crew Mobile Progressive Web Application (PWA) :

The system provides an installable Progressive Web Application (PWA) for waste collection staff working in the field.

The mobile interface supports:

- Live optimized route tracking
- Waypoint-based navigation assistance
- Real-time task updates
- Bin collection confirmation

This improves coordination between administrators and field workers while ensuring timely waste collection.



IV. WORKING FLOW –

The proposed Smart Waste Management System operates through a structured sequence of stages that enable real-time monitoring, intelligent prediction, and optimized waste collection routing. The workflow begins with sensor-based data acquisition and ends with route delivery to field workers and alert notifications to administrators. Each stage contributes to improving operational efficiency and preventing bin overflow situations.

Step 1: Data Collection

The working process starts with real-time data collection from smart waste bins deployed across different locations.

Each bin is equipped with an ultrasonic level sensor, which measures the distance between the garbage surface and the bin lid. Using this distance measurement, the system calculates the fill level percentage of the bin.

The fill percentage is calculated using the formula:

$$\text{Fill Percentage} = (\text{Current Waste Height} / \text{Total Bin Height}) \times 100$$

This measurement process is repeated periodically to ensure continuous monitoring of bin conditions. The sensor readings are processed locally by the microcontroller before transmission to the backend server.

Regular monitoring ensures that waste accumulation trends are captured accurately.

Step 2: Data Transmission

After collecting sensor readings, the microcontroller transmits telemetry data to the centralized backend server developed using the FastAPI framework.

Telemetry transmission occurs at fixed intervals of 30 seconds, enabling near real-time monitoring of bin status.

Each transmission packet includes:

- Bin identification number
- Timestamp of measurement
- Fill level percentage
- Device authentication token

The authentication token ensures that only authorized sensor devices can communicate with the server. Secure and periodic transmission of telemetry data allows the system to maintain an updated database of bin conditions across the monitoring area.

Step 3: Outlier Removal Using IQR Technique

Sensor readings collected from field environments may sometimes contain abnormal values due to environmental interference, sensor misalignment, or communication noise. Such irregular readings can reduce prediction accuracy if processed directly.

To solve this issue, the system applies the Interquartile Range (IQR) statistical filtering method to remove outliers from the dataset.

The IQR technique identifies extreme values that lie outside the acceptable statistical range and removes them before prediction processing. This ensures that only reliable data is used for further analysis.

As a result, the system improves the stability and accuracy of fill-level forecasting.

Step 4: Fill Level Prediction Using EMA Method After filtering abnormal sensor readings, the system performs future fill-level

prediction using the Exponential Moving Average (EMA) method. EMA assigns higher weight to recent observations compared to older readings, making it suitable for real-time prediction systems where waste accumulation changes continuously.

Using EMA prediction, the system estimates:

- future fill level trend
- expected overflow time
- rate of waste accumulation

This predictive capability allows the system to identify bins that are likely to become full soon, instead of reacting only after overflow occurs.

Step 5: Urgency Score Calculation

Based on prediction results, each bin is assigned an urgency score that determines its collection priority.

The urgency score is calculated using multiple parameters such as:

- current fill level percentage
- predicted time remaining before overflow
- overflow risk factor based on bin location or usage frequency

Bins with higher urgency scores are prioritized earlier in the collection schedule. This ensures that critical bins are serviced before reaching overflow conditions.

The urgency scoring mechanism helps convert raw sensor data into actionable decision-making inputs for route optimization.

Step 6: Route Optimization Using Hybrid Algorithms

After urgency scores are calculated for all bins, the system generates optimized waste collection routes for field vehicles.

The route optimization engine applies a hybrid strategy combining multiple algorithms:

Greedy Algorithm

Selects the nearest high-priority bin first to reduce immediate travel distance.

Priority Scheduling Method

Ensures bins with higher urgency scores are serviced earlier than lower-priority bins.

Hybrid Routing Model

Balances both distance minimization and urgency prioritization for efficient route planning.

2-Opt Route Refinement Algorithm

Further improves route quality by eliminating unnecessary travel loops and shortening the overall route distance.

This multi-algorithm approach significantly reduces:

- fuel consumption
- travel time
- vehicle workload

while improving collection efficiency.

Step 7: Notification and Visualization

In the final stage, optimized routing information and monitoring insights are delivered to administrators and field workers through dedicated interfaces.

Administrators receive real-time alerts through Firebase Cloud Messaging (FCM) whenever bins approach critical fill levels or require immediate attention.

The web-based monitoring dashboard displays:

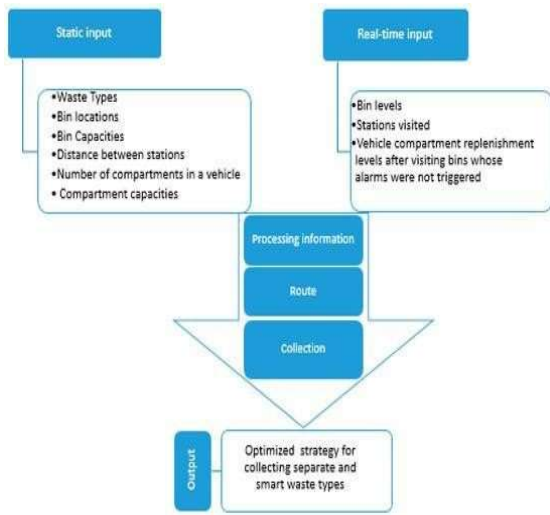
- real-time bin status visualization
- optimized vehicle route maps
- zone-wise waste analytics

At the same time, field staff receive navigation instructions through the Progressive Web Application (PWA) installed on their mobile devices.

The mobile interface supports:

- live route tracking
- waypoint navigation guidance
 - task status updates
 - bin collection confirmation

This ensures effective coordination between monitoring authorities and field workers, enabling timely waste collection operations.



V. MATHEMATICAL MODEL OF THE SYSTEM

The proposed Smart Waste Management System applies statistical analysis and optimization techniques to monitor bin status, predict overflow conditions, assign priority levels, and generate efficient vehicle routes. The mathematical model ensures accurate decision-making and improves operational efficiency by converting raw sensor measurements into actionable insights.

The following subsections describe the mathematical framework used in the system.

5.1 Fill Level Calculation Model:

The ultrasonic sensor measures the distance between the sensor mounted at the top of the bin and the surface of the waste

material. Using this distance measurement, the system calculates the percentage fill level of the bin.

Let:

- H = Total height of the waste bin
- d = Measured distance between sensor and waste surface

Then, the fill level percentage is calculated as:

$$\text{Fill Level (\%)} = \frac{(H-d)}{H} \times 100$$

This formula converts raw sensor distance readings into a standardized fill percentage value. The calculated fill level becomes the primary parameter used for monitoring bin status and predicting overflow conditions.

Higher fill-level values indicate increased urgency for waste collection.

5.2 Urgency Score Function:

To prioritize bins for collection, the system assigns an urgency score to each monitored bin. This score helps determine the order in which bins should be serviced by waste collection vehicles.

The urgency score is calculated using:

$$Urgency = w_1F + w_2T + w_3L$$

Where:

- F = Current fill level percentage
- T = Predicted overflow time factor
- L = Location-based risk factor
- w_1, w_2, w_3 = Weight coefficients representing parameter importance

The weights can be adjusted depending on operational requirements.

For example:

- bins in crowded areas receive higher location priority
- bins nearing overflow receive higher time priority
- bins already nearly full receive higher fill-level priority

Higher urgency scores indicate higher collection priority.

5.3 Route Optimization Objective Function:

The final stage of the mathematical model focuses on optimizing waste collection vehicle routes to minimize travel distance while ensuring high-priority bins are serviced first.

Let,

$$Z = \sum Distance(i, j)$$

Where

- $Distance(i, j)$ represents travel distance between bin i and bin j
- Z represents total route distance traveled by the vehicle

The objective is:

Minimize Z

Subject to the following constraints:

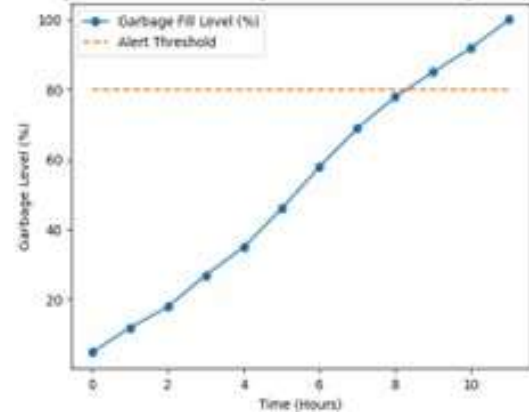
1. Each bin must be visited exactly once
2. The route must start from the depot location
3. The route must end at the depot location
4. Higher urgency bins must be serviced earlier than lower-priority bins

This optimization ensures:

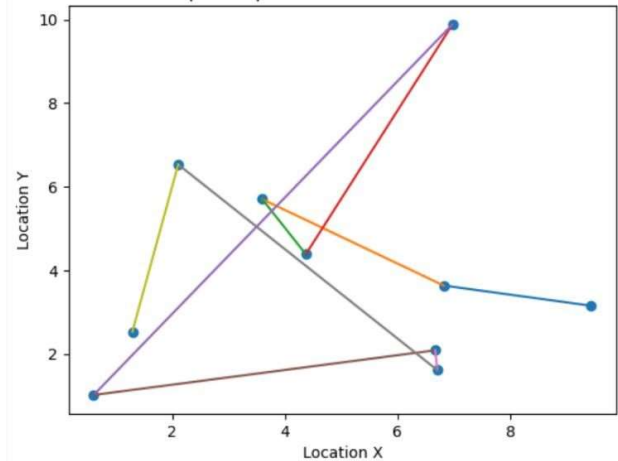
- reduced fuel consumption
- minimized travel time
- improved workforce productivity
- efficient vehicle utilization

The optimization process combines Greedy routing, Priority scheduling, Hybrid decision logic, and 2-Opt refinement techniques to generate efficient collection paths.

Garbage Bin Fill Level Monitoring in IoT-Based Waste Management System



Conceptual Optimized Waste Collection Route



VI. CONCLUSION –

The proposed AI-Powered Smart Waste Management System presents an intelligent and scalable solution to address the limitations of conventional municipal waste collection practices. By integrating Internet of Things (IoT)-based sensing technology with statistical prediction techniques and route optimization algorithms, the system transforms traditional schedule-based waste collection into a proactive and data-driven operational framework. This transition enables municipal authorities to monitor waste bin conditions in real time and respond efficiently based on actual requirements rather than fixed collection schedules.

Continuous telemetry monitoring allows authorities to track the fill status of waste bins across different locations, while predictive models estimate overflow conditions in advance using statistical forecasting methods. This predictive capability helps prevent bin overflow situations and improves service reliability. In addition, the optimized routing framework minimizes total travel distance for collection vehicles, which reduces fuel consumption, lowers operational expenses, and



supports environmentally sustainable waste management practices.

The system also incorporates a dual-authentication security mechanism that strengthens reliability by protecting both device-level communication and user-level access. Secure API key authentication ensures that only authorized IoT devices can transmit sensor data, while Firebase-based user authentication safeguards administrative access to system resources. Furthermore, the administrator dashboard and mobile Progressive Web Application enable efficient coordination between monitoring personnel and field workers by providing real-time updates, optimized route navigation, and operational insights through an integrated interface.

Overall, the proposed system contributes significantly to smart city development by enabling data-driven decision making, improving resource utilization efficiency, reducing operational costs, enhancing sanitation management processes, and supporting environmentally responsible waste handling practices. In future work, the system can be further enhanced by integrating machine learning-based waste classification techniques for automatic identification of waste types, incorporating solar-powered smart bins to improve energy sustainability, and developing advanced artificial intelligence-based demand forecasting models for large-scale citywide deployment.

VII. ACKNOWLEDGEMENT

We would like to express our sincere appreciation to our project guide and the faculty members of the Computer Science Department for their continuous guidance, valuable insights, and encouragement throughout the course of this project. Their support and constructive feedback played an important role in helping us successfully complete this work.

We are also grateful to our institution for providing the required infrastructure, technical resources, and an encouraging academic environment that made it possible to carry out this project effectively. The facilities and learning opportunities offered by the institution enabled us to apply modern technologies such as Machine Learning, and the Internet of Things to address a practical problem.

We would also like to recognize the contributions of researchers and professionals whose studies and innovations in these fields served as an important reference for our work.

Finally, we sincerely thank our friends and family members for their continuous motivation, encouragement, and moral support

during the development of this project. Their support helped us remain dedicated and successfully complete our work.

VIII. REFERENCES -

1. M. Foliato, Y. S. Low, and W. L. Yeow, "Smartbin: Smart waste management system," *IEEE Tenth International Conference on Intelligent Sensors, Sensor Networks and Information Processing*, Singapore, 2015.
2. S. Longhi, D. Marzioni, E. Alidori, G. Bucci, M. Prist, M. Grisostomi, and M. Pirro, "Solid waste management architecture using wireless sensor network technology," *International Conference on New Technologies, Mobility and Security*, 2012.
3. A. Medvedev, P. Fedchenkov, A. Zaslavsky, T. Anagnostopoulos, and S. Khoruzhnikov, "Waste management as an IoT-enabled service in smart cities," *IEEE Conference on Internet of Things*, 2015.
4. T. Anagnostopoulos et al., "Assessing dynamic models for high-priority waste collection in smart cities," *Journal of Systems and Software*, vol. 110, pp. 178–192, 2015.
5. N. Sathish Kumar, B. Vijayalakshmi, R. Jenifer Prarthana, and A. Shankar, "IoT based smart garbage alert system using Arduino UNO," *IEEE Region 10 Conference*, 2016.
6. K. Shyamala and S. Uma Maheswari, "Smart waste management system using IoT," *International Journal of Engineering Research & Technology*, vol. 6, no. 3, 2017.
7. S. Bharadwaj, M. Rego, and A. Chowdhury, "IoT based solid waste management system: A conceptual approach," *International Conference on Smart Technologies and Management*, 2016.
8. R. K. Singh and A. Kumar, "Smart garbage collection monitoring system using IoT," *International Journal of Advanced Research in Computer Engineering & Technology*, vol. 6, no. 7, 2017.
9. J. Guth, U. Breitenbücher, M. Falkenthal, P. Fremantle, O. Kopp, F. Leymann, and A. Reinfurt, "A detailed analysis of IoT platform architectures," *IEEE International Conference on Mobile Services*, 2016.
10. G. Laporte, "The vehicle routing problem: An overview of exact and approximate algorithms," *European Journal of Operational Research*, vol. 59, no. 3, pp. 345–358, 1992.
11. S. Lin and B. W. Kernighan, "An effective heuristic algorithm for the traveling-salesman problem," *Operations Research*, vol. 21, no. 2, pp. 498–516, 1973 (Foundation reference for route optimization including **2-Opt logic**)



12. H. Gupta, V. Shukla, and S. Singh, "IoT based smart waste management system using sensor networks," *Procedia Computer Science*, vol. 89, pp. 276–282, 2016.
13. A. Zanella, N. Bui, A. Castellani, L. Vangelista, and M. Zorzi, "Internet of Things for smart cities," *IEEE Internet of Things Journal*, vol. 1, no. 1, pp. 22–32, 2014.
14. R. Sedgewick and K. Wayne, *Algorithms*, 4th ed., Addison-Wesley, 2011. (Reference for **Greedy and optimization algorithms**)
15. J. Han, M. Kamber, and J. Pei, *Data Mining: Concepts and Techniques*, 3rd ed., Morgan Kaufmann, 2012. (Reference for **prediction techniques such as moving averages and data preprocessing like outlier removal**)