

AI-Powered Smart Waste Management System

Author: Sujal Wadankar

¹Member: Mukta Joshi, Sipna college of Engineering and Technology

²Member: Dnyaneshree Vaidya, Sipna College of Engineering And Technology

³Member: Pranum Jadhav, Sipna College of Engineering And Technology

⁴Member: Janhavi Kalve, Sipna College of Engineering And Technology

Abstract- Urban growth and population surges strain traditional waste management, causing bin overflows, spills, odors, pollution, and health risks from manual checks and fixed schedules. This study presents a AI-IoT system for real-time garbage and spill detection using edge sensors: ultrasonic/IR/weight/gas in smart bins and moisture/conductivity units in high-risk areas like hallways, restrooms, and wards—all geo-tagged via GPS. Data streams via Wi-Fi/LoRaWAN/GSM to a cloud platform, where ML identifies anomalies, predicts overflows, optimizes routes, and alerts nearby staff. An admin dashboard enables live monitoring, task management, analytics, and predictive maintenance, delivering a scalable solution for cities, campuses, hospitals, and transit hubs that cuts costs, boosts hygiene, reduces labor, preserves privacy, and supports sustainable urban environments.

I. INTRODUCTION –

Rapid urbanization and population growth have significantly increased the volume of municipal solid waste generated in cities around the world. Recent global estimates indicate that more than billion tonnes of solid waste 2 are produced annually, and this figure is expected to rise to approximately 3.4 billion tonnes by 2050 as urban populations continue to expand. Managing such a large amount of waste has become a major challenge for city administrations, particularly in densely populated regions where infrastructure and resources are often limited. Inefficient waste management practices can lead to serious environmental and public health issues, including air and water pollution, unpleasant living conditions, and the spread of diseases caused by decomposing waste and the presence of pests.



Traditional waste collection systems typically rely on fixed schedules and predetermined routes, regardless of the actual condition of the waste bins. In many cases, this approach results in garbage bins overflowing before the scheduled collection time, causing waste to accumulate in public areas. Overflowing bins attract insects and rodents, create foul odours, and negatively affect the overall hygiene of urban spaces. At the same time, collection vehicles may travel along routes where many bins are still partially empty, leading to unnecessary trips that increase fuel consumption, operational costs, and greenhouse gas emissions. Such inefficiencies place additional pressure on municipal budgets and reduce the overall effectiveness of waste management services.

With the advancement of digital technologies, smart waste management solutions are emerging as an effective alternative to traditional methods. The integration of Internet of Things (IoT) sensors, intelligent data processing systems, and Artificial Intelligence (AI) enables real-time monitoring of waste bins and more efficient management of collection activities. Smart bins equipped with sensors can measure parameters such as fill level, tilt, and temperature, and transmit this information to a centralized system through wireless communication networks. The collected data can then be analyzed using machine learning algorithms to predict bin usage patterns, identify potential overflow situations, and optimize collection routes.

By using data-driven decision making, these intelligent systems allow waste collection vehicles to operate only when necessary and follow optimized routes that prioritize bins

requiring immediate attention. As a result, the number of collection trips can be significantly reduced, leading to lower fuel consumption, decreased carbon emissions, and reduced operational costs. In addition, smart monitoring improves cleanliness in public spaces, enhances recycling management, and supports the development of more sustainable urban environments.

Therefore, the adoption of AI- and IoT-based smart waste management systems represents an important step toward building cleaner, more efficient, and environmentally responsible cities for the future.

II. LITERATURE REVIEW –

Recent research highlights the growing importance of smart waste management systems in modern urban environments. With rapid urbanization and population growth, cities are facing increasing challenges in handling municipal waste efficiently. Traditional waste collection systems generally operate on fixed schedules, which often results in inefficient resource usage, unnecessary fuel consumption, and delayed responses to overflowing bins. To overcome these issues, researchers have proposed various technology-driven solutions that integrate Internet of Things (IoT), artificial intelligence (AI), and optimization algorithms.

One major advancement discussed in recent studies is the use of IoT-enabled smart garbage bins. These bins are equipped with sensors such as ultrasonic or infrared sensors that measure the fill level of waste containers in real time. Ultrasonic sensors detect the distance between the top of the bin and the garbage surface, allowing the system to accurately determine how full the bin is. Experimental results from several projects show that these sensor-based systems can achieve fill-level detection accuracy of up to 95%, significantly improving monitoring reliability compared to manual inspections.

In addition to monitoring waste levels, researchers have also focused on optimizing the waste collection process. Smart city studies demonstrate that dynamic route optimization can substantially improve waste collection efficiency. Instead of following fixed collection routes, waste trucks receive updated routes based on real-time bin data. These adaptive routing systems can reduce travel distances by approximately 25–35%, which helps lower fuel consumption, reduce operational costs, and minimize environmental impact.

Another important area of research involves the use of machine learning algorithms to predict waste generation patterns. Models such as Linear Regression and Time Series

Forecasting analyze historical sensor data to estimate future waste accumulation trends. By predicting when a bin is likely to become full, municipal authorities can plan collection schedules more effectively and avoid unnecessary pickups. Predictive analytics also helps identify areas that generate more waste during specific time periods, such as markets, campuses, or public events.

Pilot implementations of these smart waste systems in large metropolitan areas have demonstrated significant improvements in operational performance. Several real-world deployments report that the integration of IoT sensors with predictive analytics can reduce garbage overflow incidents by nearly 70%. This leads to cleaner public spaces, improved sanitation standards, and enhanced citizen satisfaction.

Another key research focus involves solving the Vehicle Routing Problem (VRP) for waste collection logistics. VRP is an optimization problem that determines the most efficient routes for a fleet of vehicles visiting multiple locations. In the context of waste management, VRP-based algorithms help determine the best paths for garbage trucks to collect waste from bins that require servicing. Many studies propose hybrid optimization techniques, combining greedy algorithms with priority-based scheduling methods. These approaches improve flexibility by allowing the system to dynamically adjust routes when new data is received from sensors.

Despite these advancements, many existing systems still suffer from an important limitation. In most implementations, waste prediction models and route optimization systems operate independently, meaning the predictions are not fully integrated with the route planning process. As a result, the system cannot always make optimal real-time decisions based on predicted waste accumulation.

To address this limitation, the proposed research introduces a unified framework that integrates IoT-based data collection, AI-driven predictive analysis, and route optimization algorithms within a single platform. By combining these components, the system enables continuous monitoring, accurate forecasting of waste generation, and efficient route planning for waste collection vehicles. This integrated approach improves operational efficiency, reduces waste overflow incidents, and supports the development of sustainable smart city infrastructure.

III. SYSTEM ARCHITECTURE –

Proposed System Architecture 3.1 Overview Our system features a layered design with five core components that work together seamlessly: Data Collection Layer: Gathers real-

time sensor data from bins. Communication Layer: Transmits data reliably to the backend. Data Processing & Storage Layer: Handles cleaning, validation, and archiving. AI & Analytics Layer: Drives predictions, anomaly detection, and optimization. Application & Control Layer: Provides user interfaces and oversight tools. This modular setup supports scalability and efficient waste management.

3.2 Data Collection Layer Smart bins at the edge form the foundation, outfitted with key sensors: Ultrasonic sensors for precise fill-level measurements. Gas sensors to flag hazardous fumes. Temperature sensors for early fire risk alerts. GPS modules for accurate location tracking. These devices capture ongoing bin status updates, feeding fresh data into the system continuously.

3.3 Communication Layer Data flows from bins to a central server using robust protocols: GSM/LTE for high-speed mobile connectivity. Wi-Fi for urban hotspots. LoRaWAN to enable low-power, long-range transmission in remote areas. This multi-option approach guarantees secure, uninterrupted links even in challenging environments.

3.4 Data Processing and Storage Layer Raw inputs undergo essential preprocessing: Anomaly validation to spot outliers. Noise filtering for cleaner datasets. Archival in organized databases. We leverage cloud platforms for elastic storage, ensuring high availability. Past records stay preserved to fuel advanced forecasting.

3.5 AI and Analytics Layer Here, smart algorithms power proactive insights: a) Fill-Level Prediction Time-series forecasting models sift through historical patterns to predict when bins will overflow. b) Anomaly Detection Machine learning flags irregularities, including: Sharp temperature jumps signaling fire dangers. Unexpected fill surges from events or crowds. Faulty sensor readings. c) Route Optimization A dedicated engine ranks bins by priority and generates fuel-efficient paths, tackling issues like the Vehicle Routing Problem.

3.6 Application and Control Layer End-user tools wrap it all up: Admin dashboard for system-wide oversight. Live monitoring screens. Automated alerts for urgent issues. Driver mobile app with route guidance.



IV. WORKING FLOW –

Working of the Proposed System

The AI-Powered Smart Waste Management System operates through an integrated workflow combining IoT sensors, machine learning prediction, AI-based alerts, and route optimization to improve waste collection efficiency.

IoT-Based Data Collection : Waste bins are equipped with IoT sensors that continuously monitor parameters such as fill level, temperature, humidity, and battery status. The sensor data is transmitted to the system at regular intervals (about every 5 seconds).

Data Validation and Storage : The received telemetry data is validated to ensure accuracy. If invalid readings are detected, a sensor malfunction alert is generated. Valid data is stored in the database for analysis and historical tracking.

Machine Learning Prediction Engine : The validated data is processed by the ML module which performs: Fill Time Prediction to estimate when a bin will become full. Anomaly Detection to identify abnormal sensor readings or unusual patterns. Smart Optimization to determine the urgency level of each bin.

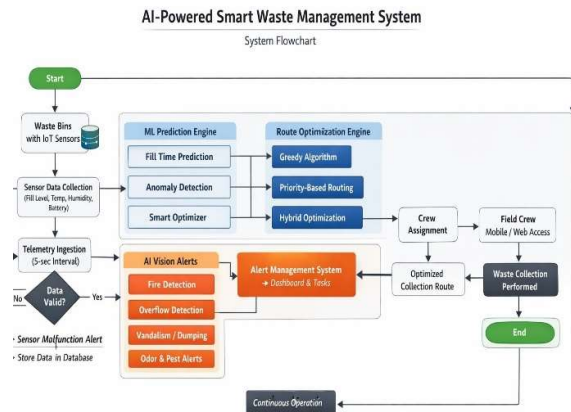
AI-Based Alert Detection : The system also generates alerts for critical situations such as fire detection, bin overflow, vandalism or illegal dumping, and odour or pest issues. These

alerts are managed through the Alert Management Dashboard.

Route Optimization : Based on bin priority and predicted fill levels, the system generates an optimized collection route using algorithms such as Greedy, Priority-based, and Hybrid optimization to reduce travel distance and service urgent bins first.

Crew Assignment and Waste Collection: The optimized route is assigned to the field crew through a mobile or web interface. The crew follows the suggested path and performs waste collection.

Continuous Monitoring : After collection, the system updates bin status and continues monitoring through real-time data collection, ensuring efficient and proactive waste management operations.



V. MATHEMATICAL MODEL OF THE SYSTEM -

The proposed smart waste management system is modeled using sensor inputs and predefined threshold values. Sensors continuously monitor the garbage level, moisture presence, and gas concentration inside the bin. If any parameter exceeds its safe threshold, the system generates an alert.

2.1 Garbage Level Detection

$$G(t) = \frac{H_{bin} - D_{sensor}}{H_{bin}} \times 100$$

$G(t)$:Garbage fill level at time t
 H_{bin} :Total height of the garbage bin
 D_{sensor} :Distance measured by ultrasonic sensor

Alert condition:

$$G(t) \geq T_g$$

T_g :Garbage threshold level (typically 80%)

2.2 Spill Detection Model

$S(t)$:Spill detection state
 T_s :Moisture threshold value

2.3 Gas Detection Model

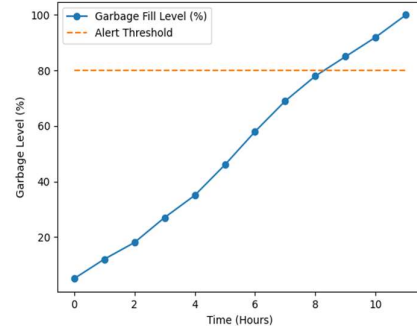
$G_{gas}(t) > T_{gas}$
 $G_{gas}(t)$:Gas concentration level at time t
 T_{gas} :Maximum safe gas threshold

2.4 AI Decision Function

$Alert = f(G(t), S(t), G_{gas}(t))$
 $Alert = \begin{cases} 1, & \text{if any parameter exceeds threshold} \\ 0, & \text{otherwise} \end{cases}$
 $Alert = 1$:Warning generated
 $Alert = 0$:Normal condition

VI. GRAPH -

Garbage Bin Fill Level Monitoring in IoT-Based Waste Management System



X-axis: Time(hours)

Y-axis: Garbage Fill Level (%)

When the garbage fill level reaches the predefined 80% threshold, the system automatically generates an alert notification. This early warning mechanism enables cleaning staff to empty the bin before it overflows, thereby maintaining cleanliness and hygiene in the monitored environment.

Benefits of the Monitoring Graph :

Predicts waste generation trends over time.
 Optimizes waste collection schedules. Prevents garbage bin overflow and maintains hygiene standards.

VI. CONCLUSION -

Rapid urbanization has increased the complexity of managing municipal waste efficiently. Conventional waste collection systems generally depend on manual inspection and fixed collection schedules, which often result in delayed responses, inefficient resource utilization, and increased operational costs.

The proposed AI-based Smart Waste Management System addresses these challenges by integrating IoT sensors, intelligent data processing, machine learning models, and route optimization techniques. Smart bins equipped with sensors continuously monitor fill levels and transmit data to a centralized platform. Machine learning algorithms analyse both historical and real-time data to predict bin status and detect abnormal conditions, enabling proactive waste collection and preventing overflow.

Additionally, optimized routing strategies help reduce travel distance, fuel consumption, and operational expenses for collection vehicles. The system dashboard allows administrators to monitor bin conditions, receive alerts, assign tasks, and analyze waste generation trends in real time.

Overall, the proposed system demonstrates how the integration of Artificial Intelligence, Machine Learning, and IoT technologies can improve waste collection efficiency and support sustainable urban infrastructure. With further deployment using real sensor networks, the system can contribute to cleaner, smarter, and more environmentally responsible cities.

VII. ACKNOWLEDGEMENT

We would like to express our sincere appreciation to our project guide and the faculty members of the Computer Science Department for their continuous guidance, valuable insights, and encouragement throughout the course of this project. Their support and constructive feedback played an important role in helping us successfully complete this work.

We are also grateful to our institution for providing the required infrastructure, technical resources, and an encouraging academic environment that made it possible to carry out this project effectively. The facilities and learning opportunities offered by the institution enabled us to apply modern technologies such as Artificial Intelligence, Machine Learning, and the Internet of Things to address a practical problem.

We would also like to recognize the contributions of researchers and professionals whose studies and innovations in these fields served as an important reference for our work.

Finally, we sincerely thank our friends and family members for their continuous motivation, encouragement, and moral support during the development of this project. Their support helped us remain dedicated and successfully complete our work.

VIII. REFERENCES -

- [1] K. M. K. Alam, M. Saini, and A. E. Saddik, "Toward social Internet of vehicles: Concept, architecture, and applications," *IEEE Access*, vol. 3, pp. 343–357, 2015.
- [2] S. Longhi, D. Marzioni, E. Alidori, G. Buo, M. Prist, M. Grisostomi, and M. Pirro, "Solid waste management architecture using wireless sensor network technology," *IEEE International Conference on New Technologies, Mobility and Security*, pp. 1–5, 2012.
- [3] M. Faccio, A. Persona, and G. Zanin, "Waste collection multi objective model with real time traceability data," *Waste Management*, vol. 31, no. 12, pp. 2391–2405, 2011.
- [4] N. Anagnostopoulos, A. Zaslavsky, A. Medvedev, and S. Khoruzhnikov, "Top-k query based dynamic scheduling for IoT-enabled smart waste collection," *IEEE International Conference on Smart City Innovations*, pp. 1–8, 2017.
- [5] A. Medvedev, P. Fedchenkov, A. Zaslavsky, T. Anagnostopoulos, and S. Khoruzhnikov, "Waste management as an IoT-enabled service in smart cities," *Internet of Things Journal*, vol. 4, no. 5, pp. 1–11, 2015.
- [6] A. Zanella, N. Bui, A. Castellani, L. Vangelista, and M. Zorzi, "Internet of Things for smart cities," *IEEE Internet of Things Journal*, vol. 1, no. 1, pp. 22–32, 2014.
- [7] M. Aazam and E. Huh, "Dynamic resource provisioning through fog micro data center," *IEEE International Conference on Pervasive Computing and Communications Workshops*, pp. 105–110, 2015.
- [8] R. K. Sinha, Y. Wei, and S. H. Hwang, "A survey on LPWA technology: LoRa and NB-IoT," *ICT Express*, vol. 3, no. 1, pp. 14–21, 2017.
- [9] S. H. Shah, M. Z. Khan, and A. Mahmood, "Smart waste management using IoT and machine learning," *Journal of Cleaner Production*, vol. 284, pp. 124–137, 2021.
- [10] P. Toth and D. Vigo, *Vehicle Routing: Problems, Methods, and Applications*, 2nd ed., Philadelphia, PA: SIAM, 2014.



- [11] G. Laporte, “The vehicle routing problem: An overview of exact and approximate algorithms,” *European Journal of Operational Research*, vol. 59, no. 3, pp. 345–358, 1992.
- [12] J. Kennedy and R. Eberhart, “Particle swarm optimization,” *Proceedings of IEEE International Conference on Neural Networks*, pp. 1942–1948, 1995.
- [13] I. Goodfellow, Y. Bengio, and A. Courville, *Deep Learning*. Cambridge, MA: MIT Press, 2016.
- [14] C. M. Bishop, *Pattern Recognition and Machine Learning*. New York, NY: Springer, 2006.
- [15] T. Anagnostopoulos, A. Zaslavsky, and S. Khoruzhnikov, “Efficient waste collection management with IoT technologies,” *IEEE International Conference on Data Science and Advanced Analytics*, pp. 1–7, 2015.
- [16] World Bank, “What a Waste 2.0: A Global Snapshot of Solid Waste Management to 2050,” World Bank Publications, Washington, DC, 2018.
- [17] S. Yin, X. Ding, A. Haghani, H. Hao, and P. Zhang, “A comparison study of basic data-driven fault diagnosis and process monitoring methods,” *IEEE Transactions on Industrial Electronics*, vol. 61, no. 11, pp. 6418–6428, 2014.